

A decorative graphic on the left side of the slide consists of a network of thin, light green lines. These lines form a complex, branching pattern that resembles a circuit board or a stylized tree. Small circles are placed at various points where the lines intersect or terminate, adding to the technical or organic feel of the design.

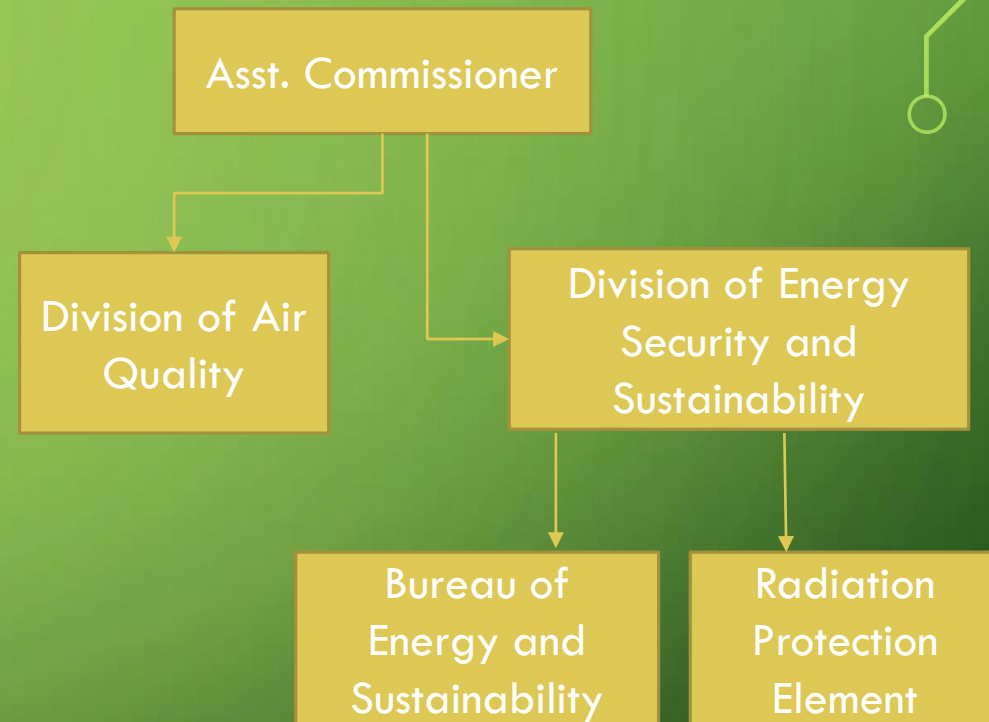
# HOW ENERGY AND SUSTAINABILITY SUPPORT NJ'S AIR INITIATIVES

PAUL BALDAUF, ASST. COMMISSIONER

AIR, ENERGY AND SUSTAINABILITY (AQES)

# AQES RESTRUCTURING HISTORY

- Formed in July 2015
- Two parallel Divisions – one housing all our Air functions (except for enforcement); the other housing all our energy related functions (including nuclear) overlaid with sustainability
- Goal – to better ensure coordination between our policy driven energy and sustainability goals, and our regulatory air quality goals.

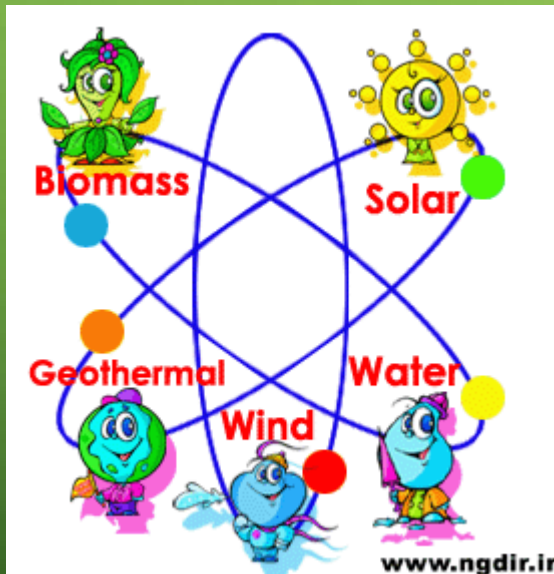


# BUREAU OF ENERGY AND SUSTAINABILITY KEY RESPONSIBILITIES

- Evaluate and promote clean and resilient energy systems
- Provide policy guidance and economic analysis on all energy and sustainability related matters
- Help strengthen the State's strategy for energy security, environmental quality, economic vitality, and public health through public-private partnerships.
- Profile, quantify and assess the State's energy and carbon footprint in support of an environmentally sound and sustainable energy future.
- Create opportunities to promote and implement sustainability principles and programs that support New Jersey's communities and businesses

# RELATING ENERGY AND SUSTAINABILITY'S KEY RESPONSIBILITIES TO AIR

Responsibility: Evaluate and promote clean and resilient energy systems



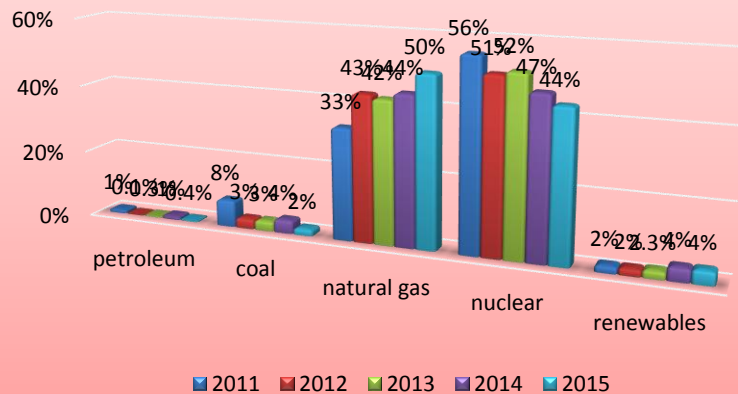
Overlap with Air Quality:

- Determining how new energy systems comply with Air regulations
- Helping develop emission estimates for future energy systems
- Working to verify energy performance claims to satisfy Air regulations

# RELATING ENERGY AND SUSTAINABILITY'S RESPONSIBILITIES TO AIR

Responsibility: Provide policy guidance and economic analysis on all energy and sustainability related matters

**New Jersey Electricity Generation by Fuel type (%), 2011-2015**



## OVERLAP WITH AIR QUALITY:

### Overlap with Air Quality:

- Reviewing existing energy guidance/policies to determine overlap and updates
- Developing guidance/policies for renewable power applications
- Ensuring consistency between economic analyses and previous Air cost values.



# RELATING ENERGY AND SUSTAINABILITY'S RESPONSIBILITIES TO AIR

Responsibility: Help balance the State's strategy for energy security with environmental, economic and public health



## OVERLAP WITH AIR QUALITY:

- Developing geospatial resiliency analyses and tools (e.g., Petroleum Toolkit)
- Participating in regional energy organizations (e.g., Transportation and Climate Initiative (TCI))
- Leverage State and Federal energy partnerships (e.g., DriveGreenNJ)

# RELATING ENERGY AND SUSTAINABILITY'S RESPONSIBILITIES TO AIR

Responsibility: Quantify and report on the State's energy and carbon footprint



Overlap with Air Quality:

- Coordinate with Air on existing air emission reduction strategies to determine carbon co-benefits
- Ensure cost and emissions estimates are developed consistent current Air methodologies.

# RELATING ENERGY AND SUSTAINABILITY'S RESPONSIBILITIES TO AIR

Responsibility: Promote and implement sustainability principles and programs



Overlap with Air Quality:

- Coordinating with Sustainable Jersey
- Coordinating the Sustainable Business Initiative
- Piggyback on existing Air partnerships and forums (e.g., Clean Air Council, Industrial Stakeholder Group, etc.)
- Integrating sustainability actions into Air initiatives