

# **A Resilient Coast**

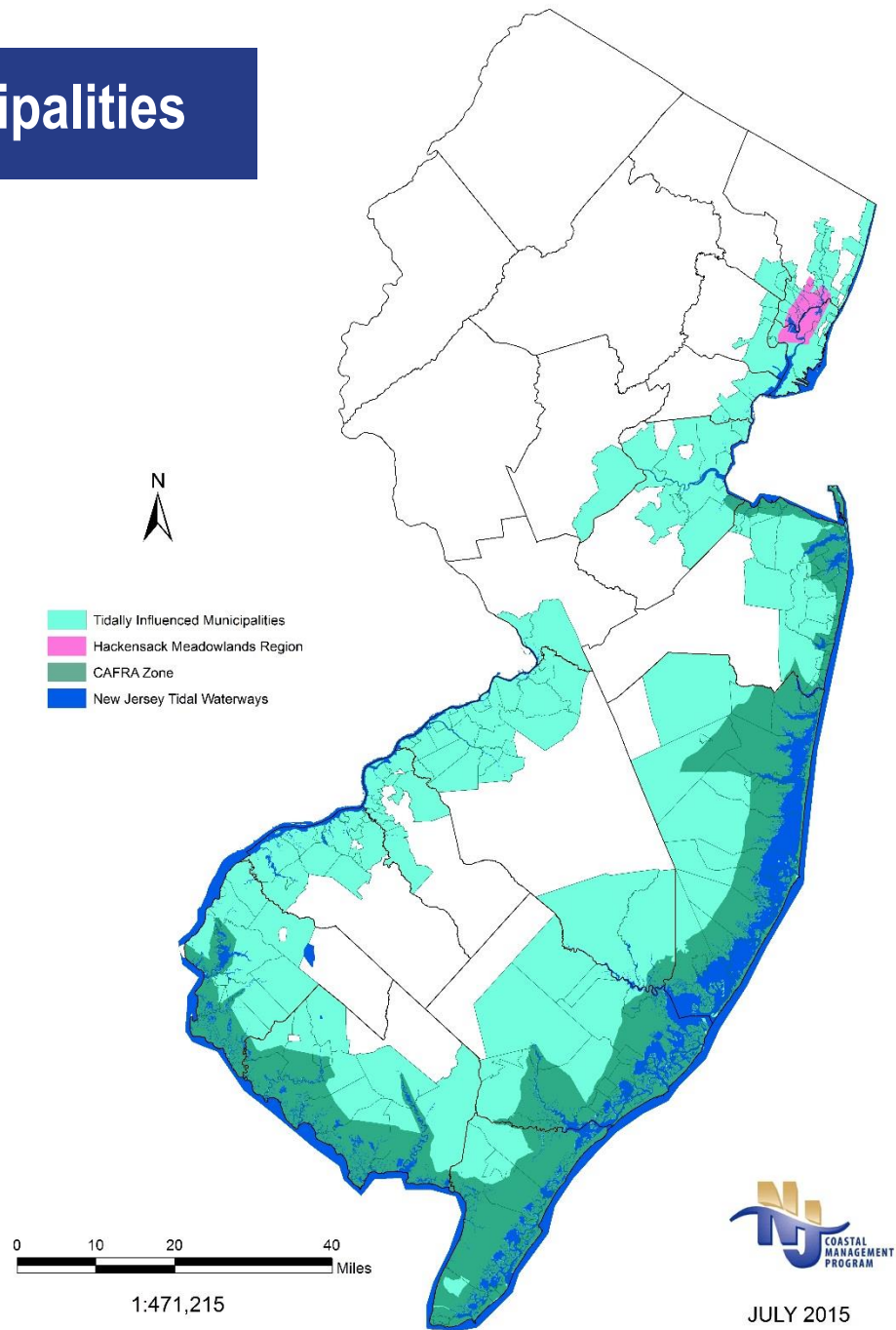
## **Program Update from the Office of Coastal and Land Use Planning**



# Coastal Partners



# NJ Coastal Municipalities



JULY 2015



# **New Jersey Coastal Zone**

- **1,800 miles of tidal coastline**
- **239 municipalities**
- **Inland, Seaward, Interstate**
- **\$16 Billion Annual Tourism**
- **1.5 Million Migratory Shorebirds**
- **50 Species Commercial Fishing**

# New Jersey Coastal Resilience Collaborative

**A network established to foster sustainable and resilient coastal communities and ecosystems by generating informed action.**

## Build partnerships

## Make resiliency a priority

## Share information

## Inform decision-making to foster action

- **Economically Vital and Ecologically Sound Resilient Coastal Communities**
- **Informed Decision Makers**
- **A Thriving Community of Practice**



## 60 General Partners





# Building to Ecological Solutions Coastal Community Hazards

A Guide for New Jersey  
Coastal Communities





# Monitoring – Citizen Science

## Citizen Science Program

- Engage the public
- Monitor ecological projects and conduct community flood monitoring
- Engage stakeholders
- Coordinate with coastal communities and other non-governmental organizations

## Project Locations

- Atlantic City – Living shoreline
- Brigantine – Living shorelines
- Ocean City – Community flood monitoring
- Upper Township – Living shoreline



# Monitoring – Drones



[https://www.state.nj.us/dep/cmp/czm\\_map-drone.html](https://www.state.nj.us/dep/cmp/czm_map-drone.html)



# Coastal Planning





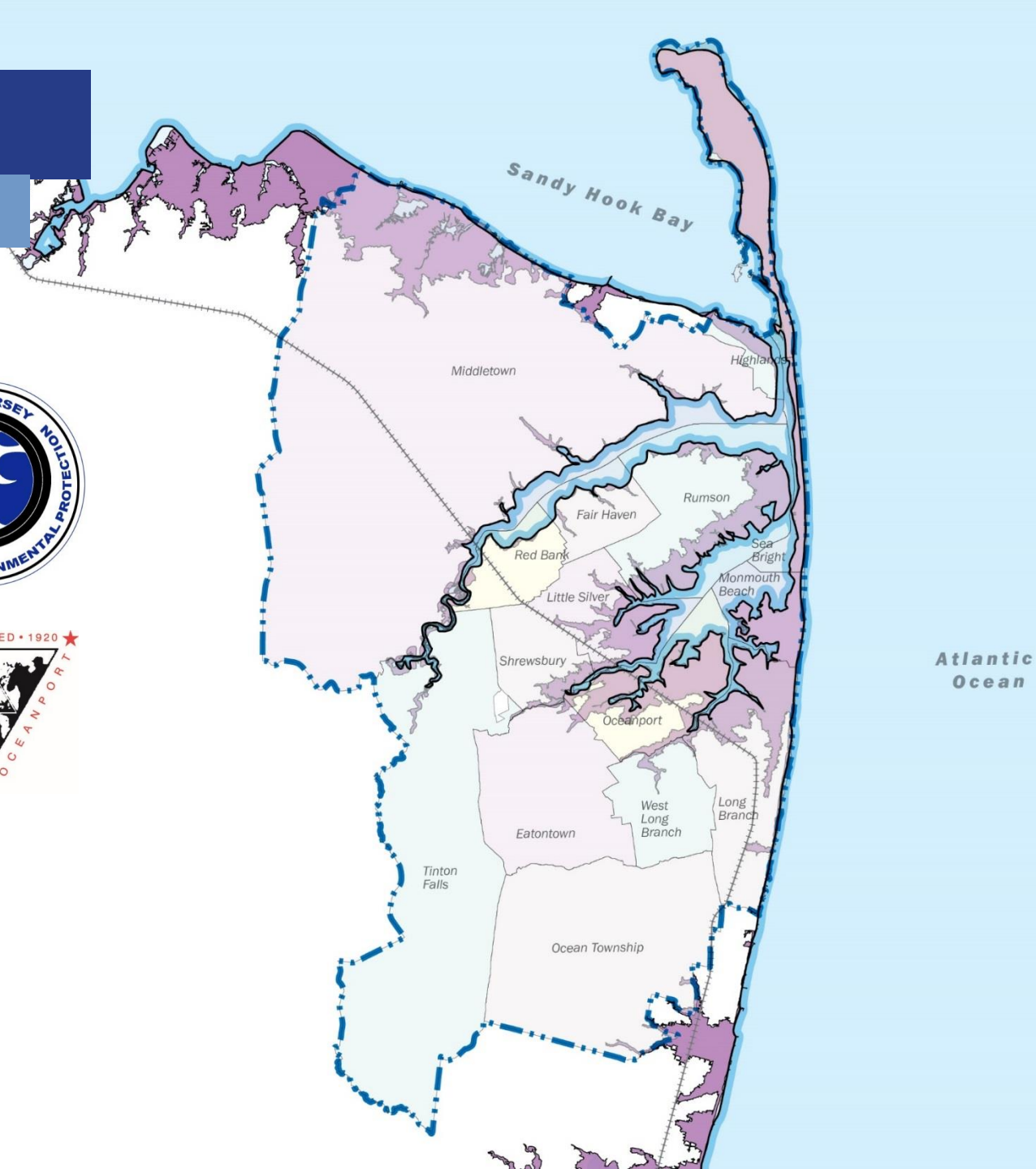
# NJ FRAMES

## Two Rivers One Future



Louis Berger

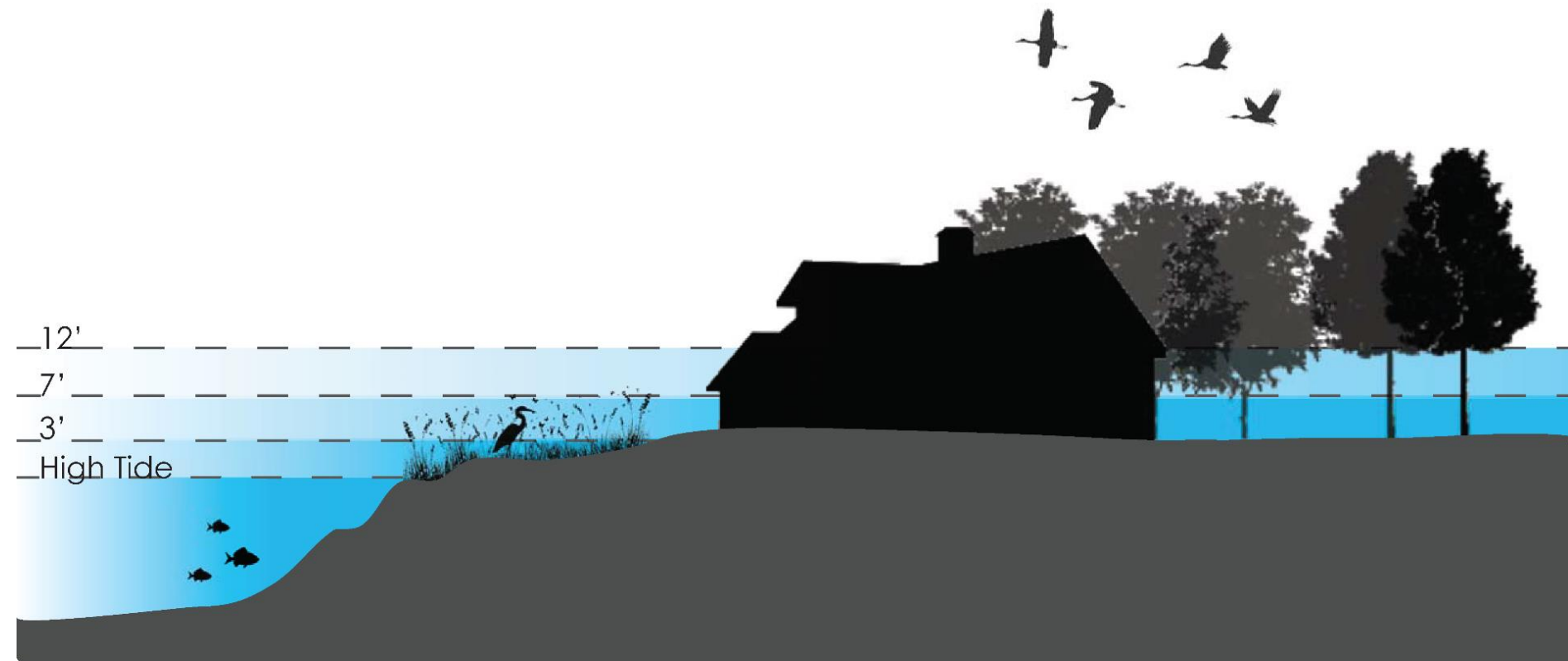
**RUTGERS**  
Climate Institute





# NJ FRAMES

## Total Water Levels



# Project of Special Merit

## A Seat at the Table

*'I Got Stuck': In Poor, Rural Communities, Fleeing Hurricane Michael Was Tough*

Oct. 11, 2018, NY Times

*As Storms Loom, Some Immigrant Families Wonder: Is It Safe to Seek Help?*

Sept. 19, 2018, NY Times

*While Residents Are Urged to Leave, Inmates Remain in Hurricane's Path*

Sept. 13, 2018, NY Times

**A tale of two Irmis: rich Miami ready for tumult as poor Miami waits and hopes**

Sept. 9, 2018, The Guardian

**Hurricane Maria exposed big gaps in help for Puerto Rico's disabled. So how to fix it?**

"We didn't prepare accurately for the emergency and to address the needs of people with disabilities," said the head of an independent government agency.

Aug. 28, 2018, NBC News

U.S. • TEXAS

**'Need Help ASAP' The Story Behind the Photo of Nursing Home Residents Trapped in Hurricane Flood Water**

Aug. 28, 2017, Time



The Program will fund the development and implementation of 4 regional resilience and adaptation action plans

## Planning

- Regional scale
- Risk/Vulnerability
- Scenario-based planning
- Cost benefit analysis
- Plan development

## Implementation

- Outreach & education
- Master plan amendments
- Ordinances
- Project design
- Feasibility
- And more...

# Resilient NJ

## Regions

### Jersey City Team

Jersey City, Newark, Hoboken, Bayonne, the HOPES Community Action Partnership and the Ironbound Community Corporation.

### Middlesex County Team

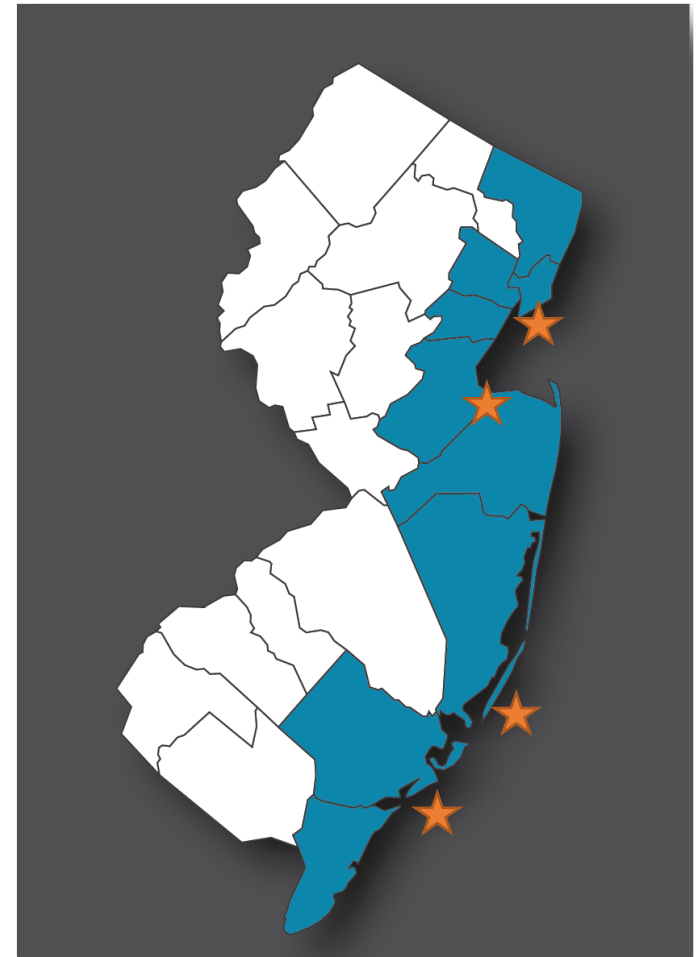
Middlesex County Office of Planning, Old Bridge, Perth Amboy, Sayreville, South River, Woodbridge and the Lower Raritan Watershed Partnership.

### Long Beach Island Team

Long Beach Township, Barnegat Light, Beach Haven, Harvey Cedars, Ship Bottom, Surf City and the Long Beach Island Community Center.

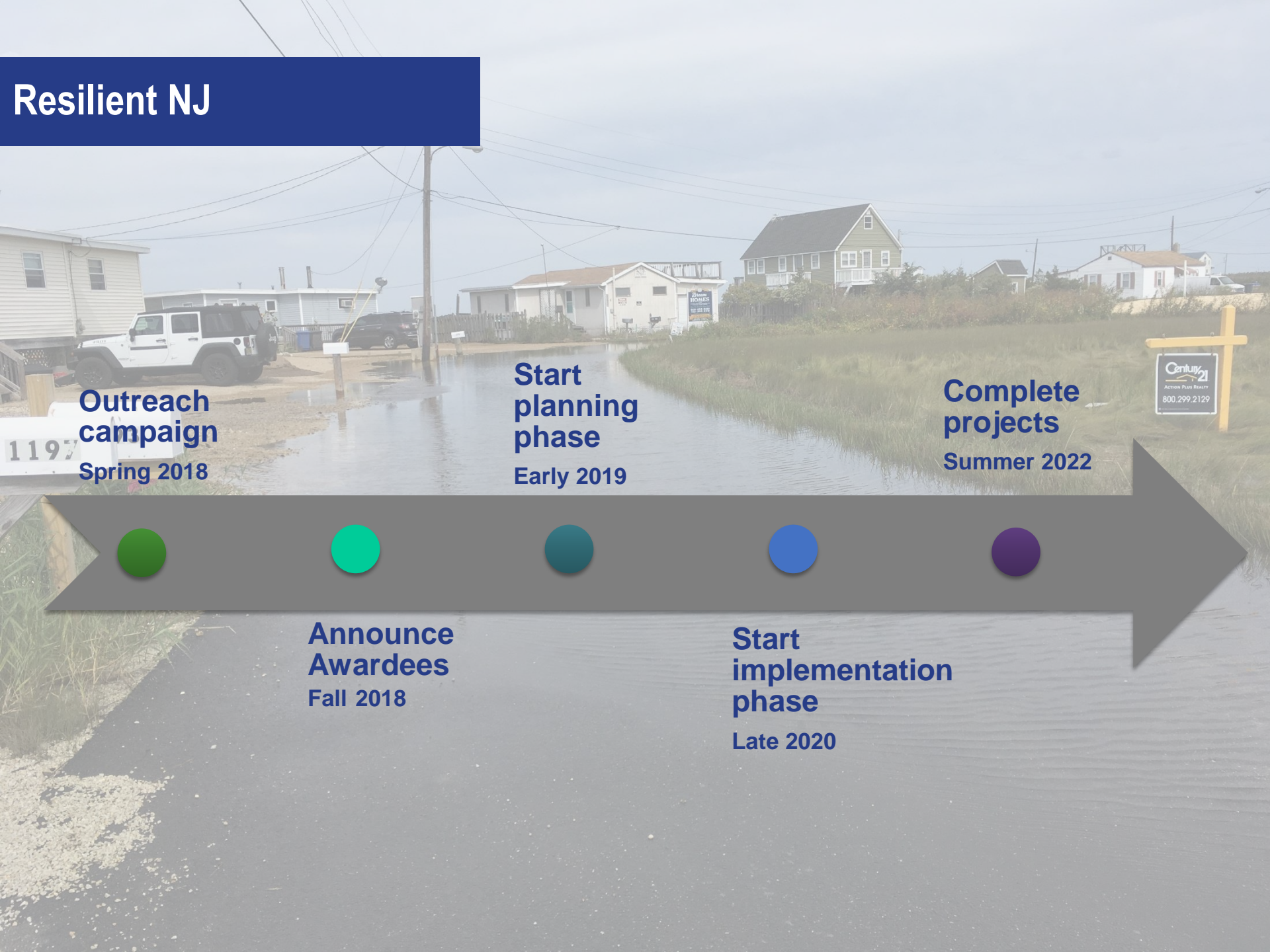
### Ventnor Team

Brigantine, Atlantic City, Ventnor, Margate, Longport, Northfield, Pleasantville, Atlantic County and the American Red Cross.





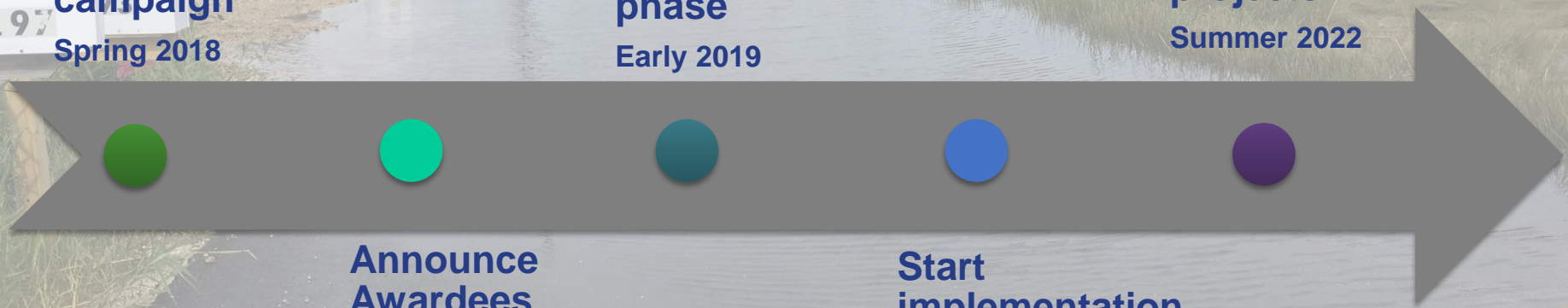
# Resilient NJ



**Outreach campaign**  
Spring 2018

**Start planning phase**  
Early 2019

**Complete projects**  
Summer 2022



**Announce Awardees**  
Fall 2018

**Start implementation phase**  
Late 2020



# **New Jersey Coastal Resilience Plan**





# Purpose

Inform and guide the State of New Jersey's priorities, policies, regulations, resource allocation, and funding in the coastal zone

- Coastal zone – 239 communities
- All types of flooding
- Broad definition of socially vulnerable
- Coordinate with ongoing state and federal resiliency activities
- Physical, social economic, and ecological risk



# DEP Priorities

- Reduce and Respond to Climate Change
- Protect New Jersey's Water
- Revitalize our Communities and Protect Public Health
- Manage and Promote Thriving Natural & Historic Resources

## Goals

- Reduce Risk & Vulnerability
- Create Consistent Guidance
- Increase Awareness & Understanding
- Make Adaptation Easier

