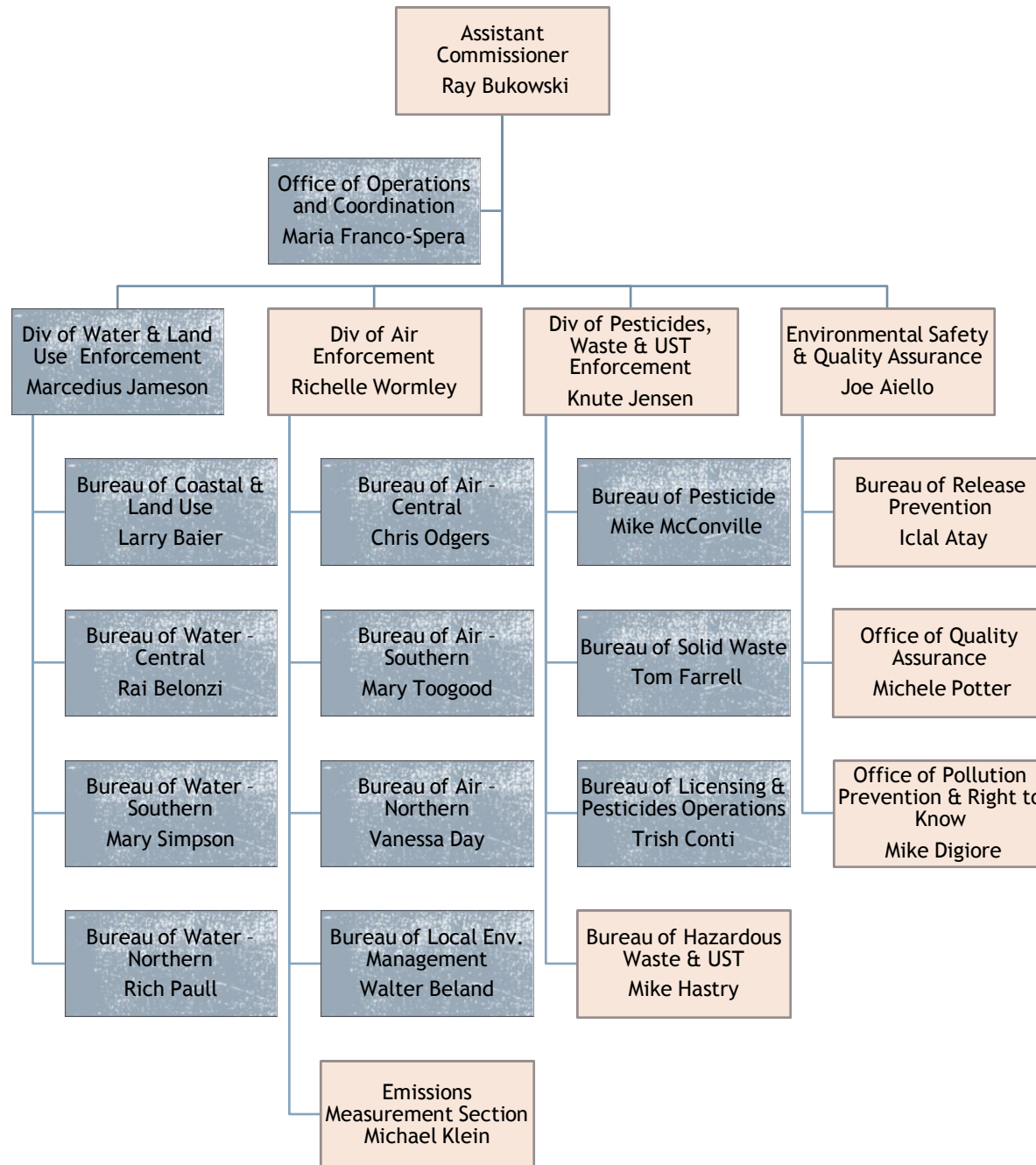


Compliance and Enforcement Updates

Ray Bukowski
Assistant Commissioner
Compliance and Enforcement





Organization

July 6, 2015:

- Emissions Measurement Section, functions remain unchanged (Bureau of Technical Services within the Air Regulation program)
- Environmental Safety & Quality Assurance

August 10, 2015

- Bureaus of Hazardous and Solid Waste re-united: reflect consistency with regulatory partners



Adapting Compliance & Enforcement

- Evolving Challenges
 - Water
 - Recycling
 - Soils and fill
 - Multi media consideration



Adapting Compliance & Enforcement

- Initiatives
 - Multimedia Impact/Resolution
 - Regional Consideration
 - Supplemental Environmental Projects
 - Stewardship
 - “Don’t Waste Your Open Space”
 - Consistent, Reliable and Commensurate Actions





Waste Enforcement Updates

Knute Jensen

Director

Division of Pesticides, Waste & UST Enforcement

RCRA Regulatory Update

- Generator Proposed Rule:
 - Significantly a consolidation of disjointed listings
 - <http://www.gpo.gov/fdsys/pkg/FR-2015-09-25/pdf/2015-23166.pdf>
- Pharmaceutical Rule:
 - Streamlines reverse distribution, bans sewerage
 - <http://www.gpo.gov/fdsys/pkg/FR-2015-09-25/pdf/2015-23167.pdf>
- Hazardous Waste growth areas: Pharma and eWaste



Dirt, Soils, Fill Waste or Recycling?

- Often called “dirty dirt” broadly includes:
 - Recycled Asphalt Pavement (RAP)/millings
 - Recycled Concrete Aggregate (RCA)
 - Contaminated soil and fill
 - Mulch and Compost
 - Soil blending



Dirt, Soil and Fill

Overabundance, Sources, Drivers

- Asphalt re-use imbalance 4-5 mil cu yds.
- Growth in construction(and demolition) with recovery from 2008
- Accelerated site cleanups from SRRA
- Storm driven vegetative waste and mulch
- Storm derived C&D material
- End of 30 year closure periods after 1981 SLF Act



Dirt, Soil and Fill - Implications

- Final destinations for material may be uncertain or costly
- Limited options for the regulated/regulators
- Resolutions are time consuming and case specific



Positive Developments

- New alignment of programs
- Creative and collaborative responses to cases
- Reinforcing multi-media, comprehensive approaches
 - waste, water and land use commonly at issue together
- Trial efforts and exercises, even new roles
- Doubling down on efficiencies and leveraging partnerships

